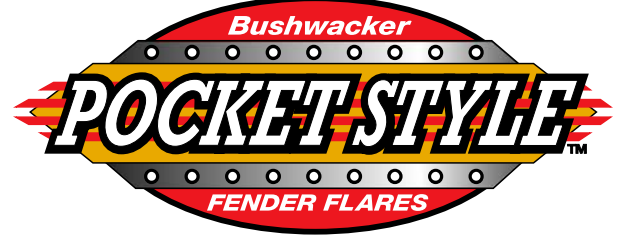
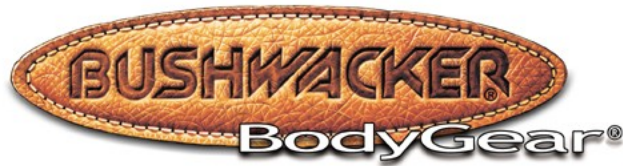


NISSAN TITAN 2004-UP

With Storage Door Piece

Set Part # 70907

Rev-3 05-15-09



Step 1:

Prior to Installation:

- A) Bushwacker only approves installing the flares according to these written instructions with the hardware provided. **WARNING:** Failure to install according to these instructions will invalidate the warranty. This includes, but is not limited to using alternative installation methods, hardware, or materials. **DO NOT USE:** Loctite, SuperGlue, or similar products on the hardware or the flares.
- B) **Fit:** Verify the fit of the flares to vehicle. **(Some filing, sanding, or cutting may be necessary to ensure proper fit).**
- C) **Painting:** (Optional) if paint is desired it must be done prior to installing flares on the vehicle clean outer surface with a good grade degreaser. **DO NOT USE LACQUER THINNER OR ENAMEL REDUCER AS A DEGREASER.** Wipe outer surface thoroughly with a tack rag prior to paint. Paint flares using a high quality enamel, or polyurethane automotive paint. (Application of a primer coat is optional) If painting edge trim (not recommended) use a flex additive.
- D) **Performance:** Using larger Tires may increase the area required to turn the vehicle. Some Tire/Rim combinations may require lowering bump stops and or installing steering stops to prevent tire from contacting flare.
- E) **Exhaust System:** Modifications may be necessary to maintain a minimum 4" clearance between flares and exhaust pipes. (Exhaust gases should **not vent directly onto flares**)
- F) **Chrome Decals:** On Front fenders, pry off V, 8 and Endurance decals with a non-marring plastic putty knife. (Decals may be put back on after flare install is complete. New double stick foam tape will be required.)
- G) **Mud Flaps:** Remove all mud flaps from vehicle, saving the Phillips screws for flare install.

TOOLS FOR EASY INSTALLATION

- Utility Knife
- #2 Right Angle Ratcheting Screw Driver
- Automotive trim pry tool
- Vinyl or Plastic putty knife
- Electric Drill with 5/16" bit
- T45 Torx Bit
- 1/2" Socket

HARDWARE LIST

- Edge Trim (324")
- Stainless Steel Screw (36 pcs)
- Washer (36 pcs)
- Nyloc Nut (36 pcs)
- Clip (15 pcs)
- #10 Clip Screw (15 pcs)
- #14 x 3/4" Screw (2 pcs)
- Grommet (3 pcs)
- #14 x 1 3/4" screw (1 pc)
- 1/2" Nylon Spacer (1 pc)

FLARE INSTALLATION PROCEDURES

Step 2: Edge Trim Installation (See Illustration #1)

- A) Peel two to three inches of red vinyl backing away from edge trim tape. Applying the adhesive side of the edge trim to the inner side of the flare, affix the edge trim to the top edge of the flare (the portion that comes in contact with the vehicle).
(See Illustration #1)
- B) Press edge trim into place along the top edge of the flare in one-foot increments, pulling red vinyl backing free as you continue to work your way around the top edge of the flare.

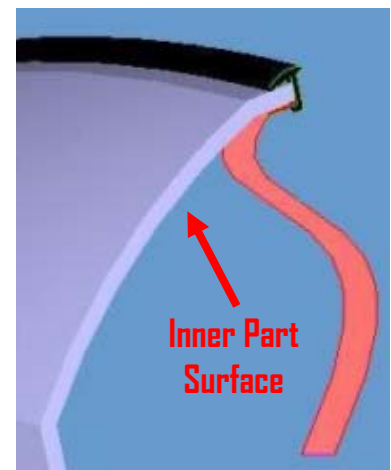


Illustration #1
Flare and Edge Trim

**Step 3: (All Flare Pieces)
Stainless Steel Screw Installation
(See Illustration #2)**

- A) Using the indents on front of pockets in flare as a guide drill a 5/16" hole.

NOTE: DRILL HOLES PRIOR TO PAINT.

- B) Insert stainless steel screw and washer into front of flare, secure with nyloc nut, using a T45 Torx bit and 1/2" Socket. (See Illustration #2)

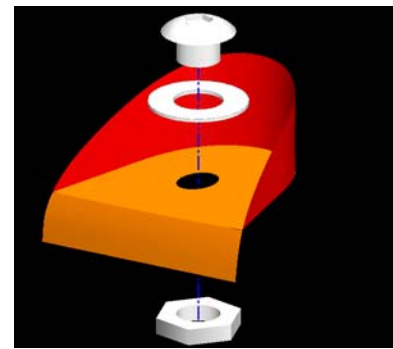


Illustration #2 Pocket Hardware

**Step 4: Front Flare Installation
(See Illustrations #3 - 5)**

- A) Remove factory mud flaps if installed, and one extra unpainted screw above mud flap. (Save screws). Also remove screw located at front of fender just above bumper. **If no mud flaps were removed, remove two unpainted factory screws per side.** (See Illustration #4)

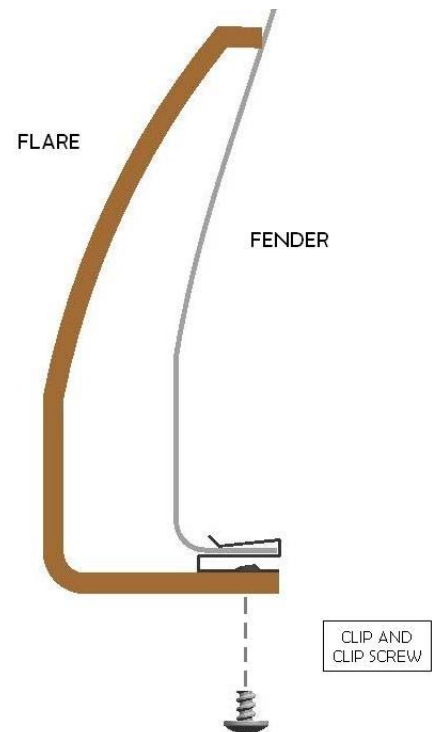
- B) Hold flare in position on fender with moderate pressure. Line up the two lowest holes in flare with the factory holes and start the two factory screws (leave loose). Line up the forwardmost hole in flare with the hole just above the bumper and start one factory screw (leave loose). (See Illustration #3).

- C) Install two clips over fender lip, lining up the hole in clips with the holes in flare. (See Illustrations #3 and 5)

- D) Start #10 clip screws in each clip, but leave loose.

- E) Insuring the flare is properly located on fender, apply moderate pressure to outside surface of flare, and tighten screws, beginning with the two factory screws working toward the front of the fender flare.

- F) Repeat for other side.



**Illustration #3
Cross Section of Flare and Fender
With Clip and #10 Clip Screw**



**Illustration #4
Driver Front Fender**



**Illustration #5
Front Driver Side Flare**

Step 5: Rear Flare Installation (See Illustrations # 3, 5 & 6)

- A) Remove factory mud flaps if installed, and one extra unpainted screw above mud flap. (Save screws).
- B) Hold **passenger side (RR)** flare in position on fender with moderate pressure (ensure the notch in the flare is positioned correctly with the gas door). Line up the lowest hole in fender with the hole in flare and start the factory screw (Leave screw loose.)
(See Illustrations #6 and #7)
- C) Install five clips over fender lip, lining up the hole in the clips with the holes in the flare.
(See Illustrations #3 and #7)
- D) Start #10 clip screws in each clip, but leave loose.
- E) Ensuring the flare is properly located on fender, apply moderate pressure to outside surface of flare, and tighten screws, beginning with the factory screw and working toward the front of the fender flare.
- F) Hold **driver side (LR)** flare in position on fender with moderate pressure (ensure the notch in the flare is positioned correctly with the gas door). (See illustrations #8 and #9)
- G) Place clips over fender lip, lining up the hole in clips with the holes in flare. (See Illustrations #3 & #9)
- H) Start #10 clip screws but leave loose.
- K) Insuring the flare is properly located on fender, apply moderate pressure to outside surface of flare, and tighten screws, beginning with the lower front screw, working toward the access door. (See illustration #9).



Illustration #6
Passenger Rear Fender



Illustration #7
Passenger Rear Flare



Illustration #8
Driver Rear Fender



Illustration #9
Driver Rear Flare

**Step 6a: Access Door Installation *Without* Factory Mud Flaps
(See Illustrations #10 and #11)**

- A) On the bottom of the door, pry out the Christmas Tree fastener.
- B) Open access door.
- C) Remove edge protector from door lip and discard.
- D) Insert two plastic grommets into the square holes on the edge of the door and one into the Christmas tree hole.
- E) Insert the supplied 1-3/4" #14 screw through bottom hole in flare, and slide the supplied 1/2" plastic spacer onto screw on inside of flare (See Illustration #10)
- F) Hold the door piece flare up to the door and line up the holes in the flare with the three factory holes.
- G) Start the 1-3/4" #14 screw into the bottom grommet first, then move onto the 3/4" #14 screws, but leave loose. (See Illustration #11)
- H) Slide a clip over the door lip at the top of the door where the indent in the flare is. (The clip will be at a slight angle). (See Illustration #12)
- I) Start clip screw, but leave loose.
- J) Insuring the door piece is properly located on door, apply moderate pressure to outside surface of flare, and tighten the 10mm screws, then the clip screw.

**Step 6b: Access Door Installation *With* Factory Mud flaps
(See Illustrations #10 and #11)**

- A) Remove the factory mud flap and save the screws.
- B) Pry out the factory grommet on the lower surface of the door and install a supplied grommet.
- C) Open access door.
- D) Remove edge protector from door lip and discard.
- E) Insert the supplied 1-3/4" #14 screw through bottom hole in flare, and slide the supplied 1/2" plastic spacer onto screw on inside of flare (See Illustration #10)
- F) Hold the door piece flare up to the door and line up the holes in the flare with the three factory holes.
- G) Start the 1-3/4" #14 screw into the bottom grommet first, then move onto the 3/4" #14 screws, but leave loose. (See Illustration #11)
- H) Slide a clip over the door lip at the top of the door where the indent in the flare is. (The clip will be at a slight angle). (See Illustration #12)
- I) Start clip screw, but leave loose.
- J) Insuring the door piece is properly located on door, apply moderate pressure to outside surface of flare, and tighten the 10mm screws, then the clip screw.



**Illustration #10
1-3/4" #14 Screw and Spacer**



**Illustration #11
Access Door Flare**



**Illustration #12
Access Door Flare**